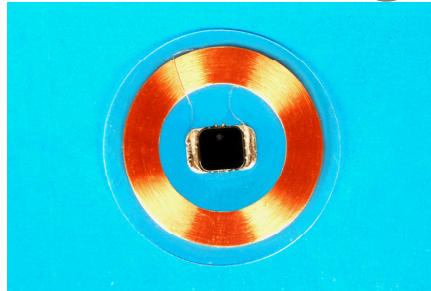


PRODUCT SPECIFICATION

PET Disc Tag



Product Code: L11XXX1

ELECTRICAL CHARACTERISTICS	Integrated Circuit(IC)	EM4102, 64 bit ; Read Only EM 4305, 512 bit ; Read/Write HitagS, 256 bit ; Read/Write			
	Operating Frequency	125 KHz±3 %			
MECHANICAL CHARACTERISTICS	Dia. External.	20 mm	25 mm	27 mm	30 mm
	Thickness	0.7 mm	0.7 mm	0.7 mm	0.7 mm
	Weight	0.3 gms	0.3 gms	0.3 gms	0.3 gms
	Product Code*	L111XX1	L112XX1	L113XX1	L114XX1
	Material	Polyester			
	Color	Transparent			
GENERAL CHARACTERISTICS	Operating temp.	-20°C to +85°C			
	Storage temp.	-20°C to +85°C			

XX EM4102 01
HitagS, 256 05
EM 4305 13